

Google Earth

Visualize the earth & beyond.



Sensory Learning: Visual and Kinaesthetic learner.

Bloom's Digital Taxonomy: Remembering - locating, searching, bookmarking.

Applying - loading, operating, uploading, sharing, editing

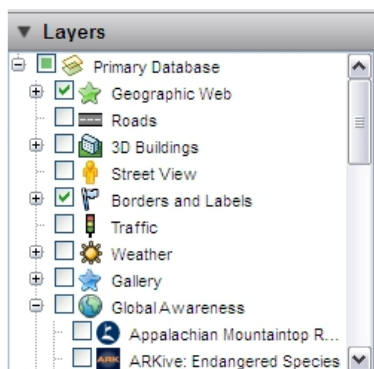
Starter Sheet - Tools for Teachers

Google earth is a client based (you have to download the software) entry level GIS tool. The acronym GIS stands for Geographical Information System. With Google Earth, the user can quickly and easily navigate around the planet using their mouse to control location and depth of view. Zooming in reveals detailed satellite imagery. The search function allows them to quickly move to different places in the world. The layers which are overlaid onto the map provide high levels of detail. Users with an account can upload material to be shared.

Process: 1. Download and install software. 2. Create an account (Free & optional). 3. Navigate and locate using search (internet connection required). 4. Create content and share (account required)



Navigation is simple using the mouse or navigation tools on the right hand side of the main pane.



The layers are powerful overlays of information that can be selected and deselected as required.

URL
<http://earth.google.com>

Alternatives:

Microsoft Live's Multimap is a limited online alternative to google earth available at <http://www.multimap.com>. (Free).

ESRI's Arcview is a alternative commercial GIS tool.

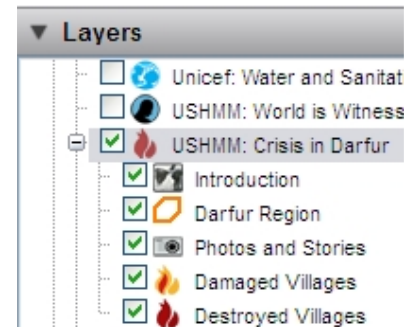
Google Earth

In the Classroom.



As a classroom tool, Google Earth enables the **visual** and **Kinaesthetic learner** to see and manipulate the work environment to navigate the world and sky (Google sky is a feature in Version 4.3 and above).

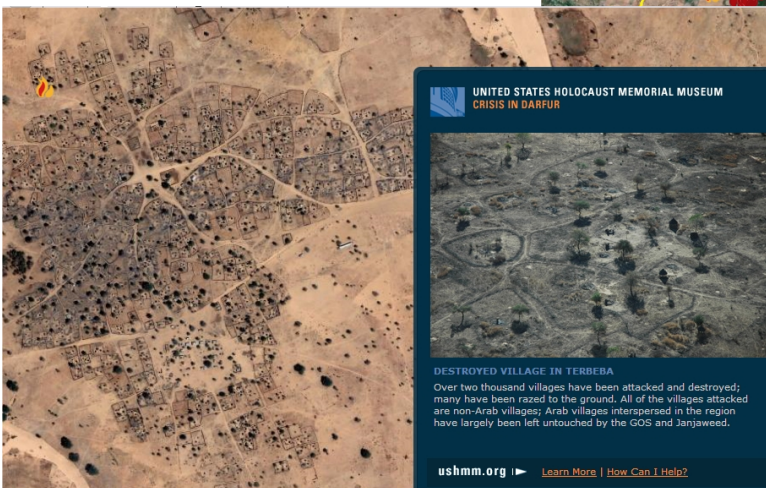
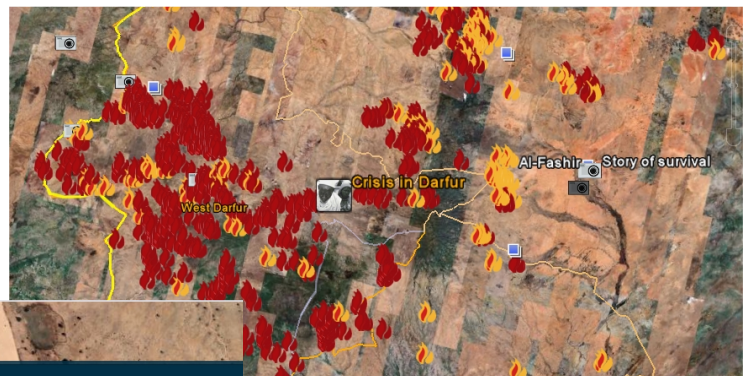
However, the true power of this tool is not in the satellite images but in the multiple layers that can be over laid across the satellite photos. The layers add borders to countries, road and numerous other key features.



In **Humanities**, Google Earth **Global Awareness layer** can be used to investigate the **Crisis in Darfur** (see above). Once this **layer** is selected the students can then **zoom** in on the **Darfur Region of Sudan**.

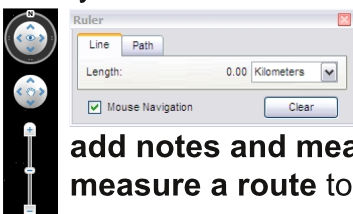
The layer is created with **damaged and destroyed villages**, **photographs and stories** embedded into the layer. Before their eyes the scale of the humanitarian disaster unfolds (see below).

Clicking on an icon Zooms the student into the village and brings an information bubble about the location and the event/s that occurred there (see below). The **camera icons** represents photos of the location, event or its aftermath.



This icon zooms in on the **Destroyed village** in Terbeba. There is a **broad satellite image** supported by **detailed camera images** of the destruction.

Using **Google Earth** and the **Crisis in Darfur layer** in the **Global Awareness Layer**, the students develop an understanding of the scale of the crisis, read the **personal accounts** of survivors and witness the destruction of whole villages. They are able to see the scale of the **refugee camps** that the thousands of displaced people are forced to flee to.



The **navigation tools** (see far left), **ruler** (see left) and **toolbar** (see above) allow the student to **find and save locations**, **add notes and measure distances**. The **path** feature within the ruler allows you to **measure a route** to a location.